

## Cooker hob Elettra 7064 062

Cooker hobs

Code: 7064 062



### DETAILS

Supply	220-240 V; 50.60 Hz
--------	---------------------

Edge/Installation Type	Standard (8 mm Edge)
------------------------	----------------------

Dimensions	760x500 mm
------------	------------

Base size	76cm
-----------	------

Heating element	Five burners
-----------------	--------------

Cut out	560x480 mm
---------	------------

Grids	Cast iron grids and enamelled burner covers
-------	---

Material/Finish	Foster-brushed finish AISI 304 stainless steel
-----------------	--

Total power	10.700 W
-------------	----------

Auxiliary	1.000 W
-----------	---------

Semirapid	2x1.750 W
-----------	-----------

Rapid	2.700 W
-------	---------

Triple crown	3.500 W
--------------	---------

Safety	Safety valve with quick-acting thermocouple
--------	---

Ignition	Electric ignition under knob
----------	------------------------------

Gas type	Tested for installation with natural gas, LPG nozzle set included.
----------	--

Type	Gas Hob
------	---------

## FEATURES

Cast iron grids	Cast-iron is the ideal material for an hob grid, this due to the manifold properties characterising it: high heat capacity that improves cooking performance; high weight and stability that improve safety; sturdiness that preserves the hob's original aspect over time; easy cleaning.
-----------------	--

Safe cooking	All Foster cooker hobs are equipped with safety valves. They shut off the gas supply very quickly if the flame accidentally goes out.
--------------	---

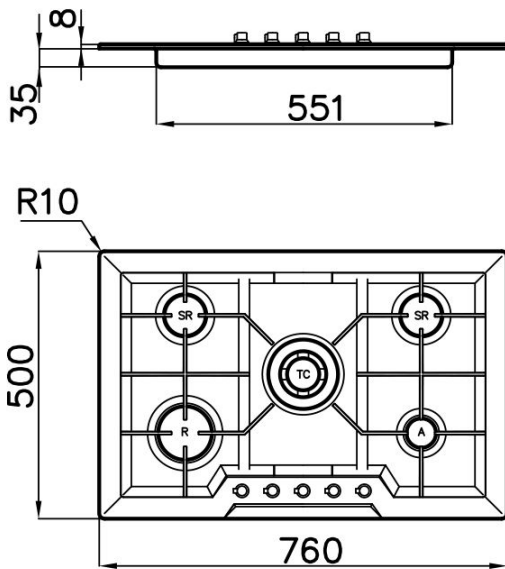
Special burners	Many Foster hobs are equipped with special burners, with two or three rings of fire that greatly increase the power delivered and the heated surface. In the DUAL models the two fire crowns also have independent ignition, making these burners perfect for both intensive and delicate cooking.
-----------------	--

Under-knob ignition	The utmost freedom of movement with electronic under-knob ignition, a common feature of all models that allows a one-hand ignition of the burner.
---------------------	---

## Narrow cut-out

These 5 burners products for standard built-in installation require a cut-out of only 56 cm, i.e. less than their nominal width. This makes them an interesting alternative for 60 cm models, which usually require the same cut-out.

## TECHNICAL DATA



## GALLERY



## OPTIONAL ACCESSORIES



Cast iron wok support 9601 668



Induction Pro - Cookware set -  
8pcs 8210 008